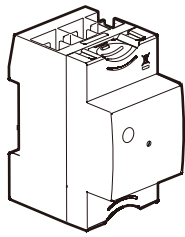
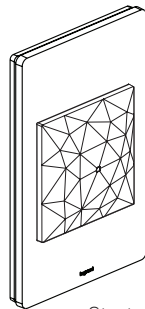


Requires prior installation of Excel Life with Netatmo Gateway or Starter Kit

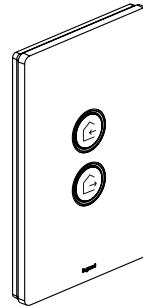


DIN- rail Gateway  
(Cat. No. 412181)

OR



Starter Kit  
(EWNSKIT Series)

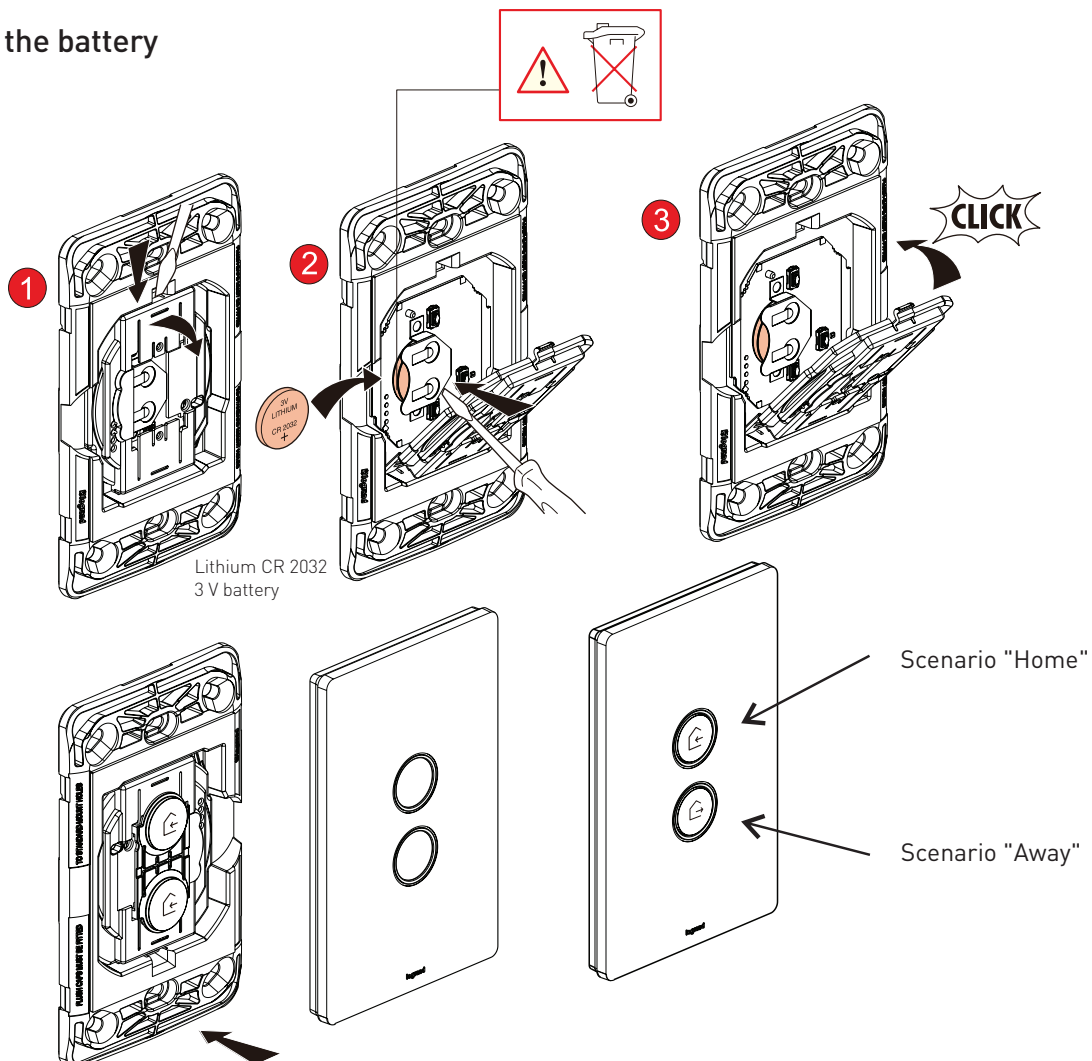


Frequency bands: 2.4 - 2.4835 GHz  
Power level :<100mW

### Configuring the Wireless Switch

Open the **Home+Control App**, go to **Settings / Add Product**, select **Legrand**, select **"Wireless Switch or Product"**, then **"Scenes Switch"**. Follow the step-by-step instructions.

### Replacing the battery



## Product Notes

- For indoor use only.
- This product must be installed and used as per these instructions.
- This product is only suitable for information technology equipment.
- This product is not suitable for installation in hazardous and/or corrosive areas.
- This product should not be installed in areas exposed to constant vibration, temperature fluctuations, or areas of high humidity.
- This product has been designed to operate in ambient temperatures 5°C to 40°C.
- This product has been designed to operate on a nominal supply voltage of 230 - 240 V a.c. 50 Hz.
- The material in this product may vary in colour from batch to batch. Colour matching from one batch to another cannot be guaranteed.
- Extended exposure to UV rays (such as exposure to direct sunlight) may cause discolouration of this product.
- Electrical installations periodically receive transient over-voltages. This product has been designed to minimise the effect of such voltages on connected equipment. It may not give full protection for extreme over-voltage transients such as those resulting from a close lightning strike.
- This product contains no serviceable parts and no attempt should be made to repair this product. If the product is faulty it should be discarded.
- This product utilises intellectual property in the form of registered designs, trademarks, and/or patents. Such intellectual property remains the property of Legrand in all cases.
- Legrand reserves the right to modify the specification of this product at any time.

## Warranty

Legrand Australia Pty Ltd will honour all statutory guarantees that you as a consumer are entitled to rely upon under the Australian and New Zealand Consumer Laws against a manufacturer, including a guarantee that this product is of acceptable quality.

To make a claim under any statutory guarantee you should first contact the supplier, or retailer from whom you purchased this product.

## Customer Service

For all Customer Service and Technical Support enquiries please call Monday to Friday during business hours.

Legrand Australia  
1300 369 777  
[www.legrand.com.au](http://www.legrand.com.au)

Legrand New Zealand  
0800 476 009  
[www.legrand.co.nz](http://www.legrand.co.nz)

ABN: 31 000 102 661

